



**In-Position**  
Technologies  
www.ipotech1.com

## ADAPTIVE GRIPPERS



**HAND-E**



**2-FINGER 85**



**2-FINGER 140**

### EASY TO USE

- Built for Universal Robots
  - Plug + Play
- Free programming software

### VERSATILE

- 3 wide-stroke options
- Multiple grip modes
- Built-in position feedback

### SUIT INDUSTRIAL NEEDS

- Fast and strong
- Precise and durable
- Part validation

**START PRODUCTION FASTER**



Pick and Place



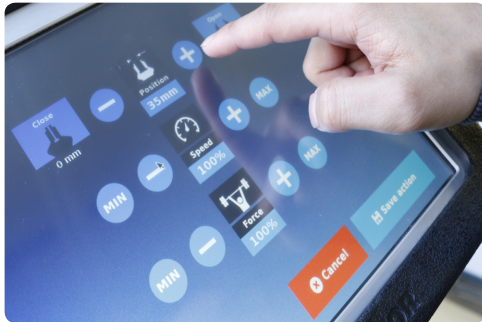
Assembly



Quality Testing



Machine Tending



## TAKE FULL CONTROL

ADJUST THE GRIPPER'S POSITION, SPEED, AND FORCE FOR A PERFECT GRASP



## USE A DUAL-GRIPPER COMBO

REDUCE CYCLE TIME BY ADDING MULTIPLE GRIPPERS ON THE SAME ROBOT



## ENABLE NEW APPLICATIONS WITH VISION AND FORCE CONTROL

INTEGRATE SEAMLESSLY WITH THE ROBOTIQ FT 300 FORCE TORQUE SENSOR AND WRIST CAMERA

## WHAT'S NEXT?

Get access to the Adaptive Grippers specifications at [support.robotiq.com](https://support.robotiq.com)

Chat with the Robotiq sales team:  
[iss@robotiq.com](mailto:iss@robotiq.com)  
1-888-ROBOTIQ

Place your contact information here