

MEMOR™ K



The pocketable and powerful Mobile Computer for any data capture application



In-Position Technologies

www.iptech1.com | (877) 478-3241 | help@iptech1.com

MEMOR™ K - YOUR DAILY COMPANION FOR ALL DATA CAPTURE ACTIVITIES

Datalogic's Memor K mobile computer is the perfect pocketable business companion for any data capture application, from assisted sales to the shop floor, or back-end receiving to the warehouse. It might be small in size, but it's very large in technology!

The Memor K mobile computer includes a powerful 2 GHz octa-core processor with 3 GB of memory featuring Android™ 9. The backlit keyboard ensures very fast data input, while the 4 inch display provides the user with plenty of space for their applications.

COMMUNICATION AND DESIGN

The powerful Wi-Fi connection which includes AC standard allows users to access very fast download and upload connections, while the USB-C ensures exceptional data exchange and charging speeds.

The Memor K mobile computers' light weight and thin design, along with 2 comfortably positioned side keys and SoftSpot™ technology for a variety of user-defined functions, make scanning processes both easy and fast. It is also very durable with an IP54 rating and 1.2 m / 4 feet drop spec. The 3,800 mAh battery ensures a very long operational scanning session.

KEYBOARD AND SCAN ENGINE

The soft-touch, backlit keyboard allows users to quickly type in information such as quantity, description or location of any item scanned. The lightning fast 2D imager allows users to easily read any 1D or 2D barcode from any surface, including mobile screens.

FEATURES

- Ultra-Ergonomic, compact and robust
- 4 inch capacitive multi-touch display with Dragontrail™ hardened glass
- Android 9
- 2 GHz, Quad/Octa CPU with 3 GB RAM / 32 GB Flash
- Backlit 24 key rubber keyboard, plus two side scan keys and two programmable side keys
- Replaceable 3,800 mAh Li-Ion Battery
- Ruggedized with drop resistance to 1.2 m / 4 ft to concrete (1.5 m / 5 ft with rubber boot) and IP54 sealing
- Powerful Wi-Fi including the latest 802.11ac standard
- Bluetooth® v5 short range wireless technology and BLE
- NFC for proximity communications
- Rear camera with auto focus, 8 MP with flash LED
- Advanced 2D ultra-slim VGA imager with Datalogic's patented 'Green Spot' technology for visual good-read feedback
- Datalogic's SoftSpot™ technology for innovative triggering through the touch display
- EASEOFCARE Service Plans offer a wide range of options to protect your investment, ensuring maximum productivity and ROI.

INDUSTRY - APPLICATION

Retail:

- Inventory
- Assisted sales
- Access control
- Price checking
- Shop floor applications
- Online order fulfilment

T&L:

- Receiving
- Manual picking (PTG)
- Order verification
- Inventory
- Shipping

Manufacturing:

- Production and quality control
- Inventory management
- Picking

Healthcare:

- Pharmacy - In-store operations
- Pharmacy/Hospital pharmacy - Inventory management
- Pharmacy warehouse/Hospital pharmacy warehouse - Light warehousing
- Analysis Labs - specimen traceability
- Home healthcare

NOTE: The Android robot is reproduced or modified from work created and shared by Google and used according to terms described in the Creative Commons 3.0 Attribution License.



TECHNICAL SPECIFICATIONS

WIRELESS COMMUNICATIONS

Local Area Network (WLAN)	IEEE 802.11 a/b/g/n/ac/d/e/i/w; Frequency range: Country dependent, typically 2.4 GHz and 5 GHz bands
Personal Area Network (WPAN)	Bluetooth wireless technology v5 (Classic Bluetooth wireless technology and BLE)
NFC Communication	Support for the following standards: ISO14443-4 (type-A, type-B); ISO15693; Mifare; Felica

DECODING CAPABILITY

1D / Linear Codes	Auto discriminates all standard 1D codes including GS1 DataBar™ linear codes.
2D Codes	Aztec Code, Data Matrix, HanXin Code, MaxiCode, MicroQR Code, QR Code, EAN/JAN Composites, UPC A/E Composites
Postal Codes	Australian Post, Japan Post, British Post; China Post; IMB, Korea Post, KIX Code, PLANET, POSTNET, Royal Mail Code (RM4SCC)
Stacked Codes	Micro-PDF417, MacroPDF, PDF417, GS1 DataBar Composites, GS1 DataBar Expanded Stacked, GS1 DataBar Stacked, GS1 DataBar Stacked Omnidirectional

ELECTRICAL

Battery	Removable battery pack 3800 mAh with rechargeable Li-Ion batteries
----------------	--

ENVIRONMENTAL

Drop Resistance	Withstands 18 drops from 1.2 m / 4 ft to concrete according to IEC62-2-32 Method 1. Device with rubber boot: withstands 18 drops from 1.5 m / 5 ft to concrete according to IEC62-2-32 Method 1 with rubber boot.
Tumbles	Device: exceeds 400 hits at 0.5 m (200 cycle) per IEC 60068-2-32 specification. Device with rubber boot: exceeds 600 hits at 0.5 m (300 cycle) per IEC 60068-2-32 specification.
Particulate and Water Sealing	IP54
Temperature	Operating: -20 to 50 °C / -4 to 122 °F Storage/Transport: -30 to 70 °C / -22 to 158 °F

INTERFACES

Interfaces	USB-C: High Speed USB 2.0 OTG
-------------------	-------------------------------

SENSORS

Accelerometer	3-Axis accelerometer to detect orientation
Ambient Light	Auto adjusts display backlight
Proximity	Auto deactivates display when close to face

PHYSICAL CHARACTERISTICS

Dimensions	16.0 x 7.1 x 1.7 cm / 6.2 x 2.7 x 0.66 in
Display	4 inch WVGA resolution 800 x 480; LED backlight; Touch Screen: 5 points multi-touch capacitive panel with Dragontrail hardened glass
Keys	Backlighted 24 keys rubber keyboard, plus two side scan keys and two programmable side keys
Weight	With Battery: 268 g / 9.4 oz

READING PERFORMANCE

Camera	Resolution: 8 MP; Illumination: LED flash; Lens: Auto focus
Scan Engine	2D Ultra slim area imager (supports 1D / 2D codes); Datalogic's 'Green Spot' for good-read feedback; Resolution: VGA (640 x 480 pixels)
Minimum Element Width	1D Linear: 0.101 mm / 4 mils; PDF417: 0.167 mm / 6.6 mils; Data Matrix: 0.190 mm / 7.5 mils

SAFETY & REGULATORY

Agency Approvals	The product meets necessary safety and regulatory approvals for its intended use.
Environmental Compliance	Complies to EU RoHS

SOFTWARE

Applications	Datalogic's SoftSpot technology for configurable soft triggers
Provisioning	QR Code enrollment
Configuration and Maintenance	Scan2Deploy Studio, DXU
Development	Java, Cordova and Xamarin SDK available
MDM	SOTI MobiControl, VMWare AirWatch, Ivanti Avalanche, 42Gears SureMDM

SYSTEM

Expansion Slots	Micro-SD card slot: Compatible with Micro SD-HC cards, up to 64 GB; User-accessible
Memory	System RAM: 3 GB; eMMC Flash: 32 GB
Microprocessor	2 GHz Octa-core
Operating System	Android 9
Real-Time Clock	Time and date stamping under software control

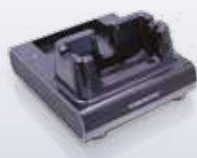
WARRANTY

Warranty	1-Year Factory Warranty
-----------------	-------------------------

ACCESSORIES

Base Stations/Chargers

94A150111 Memor K Single Slot Dock



Miscellaneous

94ACC0312 Memor K Belt Holster

94ACC0313 Memor K Rubber Boot



In-Position Technologies

www.iptech1.com | (877) 478-3241 | help@iptech1.com