

In-Position Technologies

www.iptech1.com | (877) 478-3241 | help@iptech1.com

FREE YOUR ROBOT

FLEXX REFERENCE | BEACON | CONNECT

Flexxbotics

1 (877) 456 1576 | 711 Atlantic Wharf, Boston, MA | www.flexxbotics.com

WATCH DEMO VIDEO



UNIVERSAL ROBOTS+
Certified

FLEXX CONNECT

Flexx Beacon + Flexx Reference



REDEPLOY ROBOT
ON MULTIPLE JOBS



INCREASE ROBOT
UTILIZATION



EASY TO REDEPLOY.
NO ENGINEER NEEDED
TO MOVE ROBOTS



WIRELESSLY
AUTOLOAD CORRECT
PROGRAM



LOCK YOUR ROBOT W/
6 DEGREE OFFSET



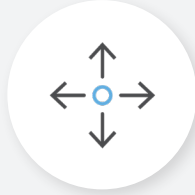
Flexxbotics

THE FLEXX REFERENCE

Makes any UR flexible with a 6 Degree Lockout



REDEPLOY ROBOT
ON MULTIPLE JOBS

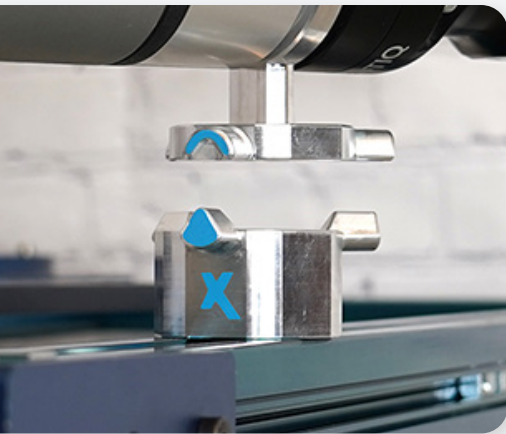


TOUCH OFF TOOL
FOR MAINTENANCE



EVALUATE PROTOTYPE
ROBOT APPS

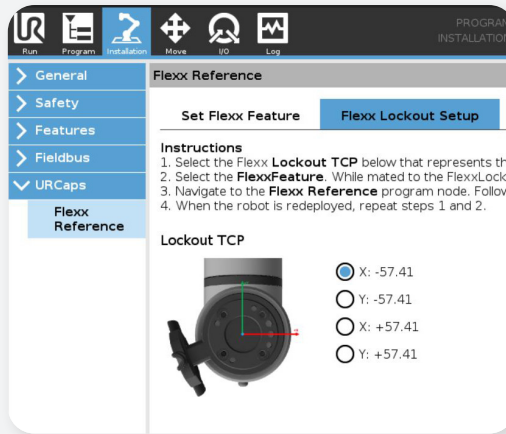
Lock It



1

SET FLEXX REF VIA
FREE DRIVE INTO
LOCKOUT

Save It



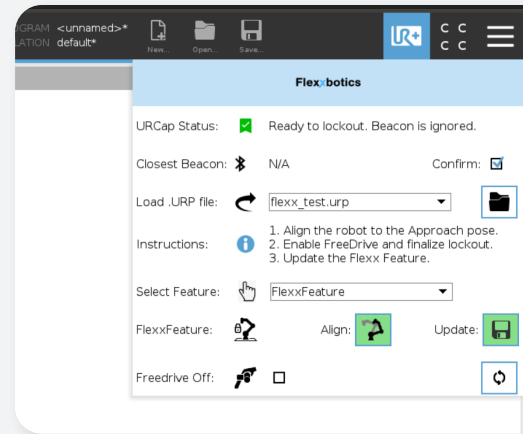
2

CAPTURE
COORDINATES VIA
UR CAP PLUGIN

3

MOVE PREVIOUSLY
SAVED PROGRAM AND
UNDER FLEXXFEATURE.

Run It



4

FLEXXFEATURE
REALIGNS ROBOT
TO STATION

5

NOW FREE TO MOVE
BETWEEN JOBS, PERFORM
MAINTENANCE, OR TOUCH OFF
AFTER BUMP/VIBRATION

ACCURACY STANDARD: $\pm 1\text{MM}$ / HIGH ACCURACY: $\pm 0.1-0.5\text{MM}$

LOCKING TIME 1-2 MINUTES

MATERIAL ALUMINUM

ROBOT COMPATIBILITY UR E-SERIES ROBOTS

END EFFECTOR COMPATIBILITY ALL UR+ END EFFECTORS AND OTHERS

LEAD TIME 1 WEEK

Flexxbotics

THE FLEXX BEACON

Adds Connectivity and Autonomous Process to Mobility



USES BEACON TECHNOLOGY TO LOCATE AND CONNECT THE ROBOT TO SURROUNDINGS



PROVIDES POSITIONAL AWARENESS, ALLOWING EFFICIENT MOBILITY

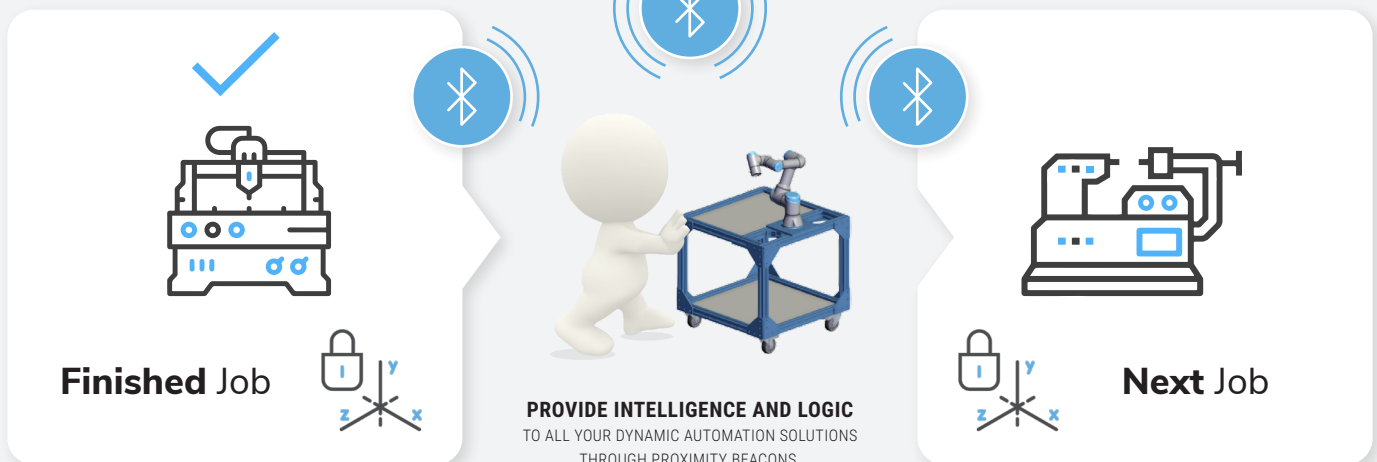


PROVIDES INTELLIGENCE LAYER TO LOAD CORRECT PART AND PROGRAM



EASY REDEPLOYMENT WITH OPERATOR. ADDING RELIABLE PROCESS TO MOBILITY

Beacon Technology



| | |
|----------------|----------------------|
| SCANNING RANGE | UP TO 4 FT |
| COMMUNICATION | BLE 5.0 |
| IP RATING | 67 |
| POWER | BATTERY (LITHIUM 3V) |
| BEACON SPACING | 3 - 100 FT |
| LEAD TIME | 1 WEEK |



Flexxbotics