

In-Position Technologies

Your Engineering Partner For Success



- **ARIZONA**
Chandler - 480-893-8086
Tucson - 520-428-3100
- **NEW MEXICO**
Albuquerque - 505-232-6612
- **COLORADO**
Westminster - 303-231-9955
- **UTAH**
Kaysville - 801-355-9899
- **CALIFORNIA**
Fullerton - 661-383-2625

Everywhere: 877-478-3241 [877-IP-TECH1]
General Email: help@iptech1.com
Global Fax: 877-478-3242 [877-IP-TECH2]



LINEAR MOTION STAGES



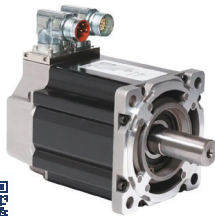
ROTARY STAGES & POSITIONERS



PRECISION STAGES



SERVO & STEP MOTORS



KIT MOTORS



INTEGRATED MOTORS



MOTION CONTROLLERS



DRIVES



100+ KW DRIVES



INDUSTRIAL PC'S & HMI



MACHINE COMPONENTS



INDUSTRY 4.0 & IOT



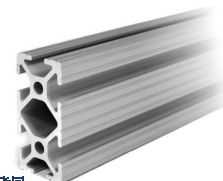
LINEAR MOTORS



VEHICLE ELECTRIFICATION



INDUSTRIAL FRAMING



PRODUCT CATALOG

Scan the QR code or go to www.iptech1.com/products/ to learn more!

COLLABORATIVE & INDUSTRIAL



FORKLIFT ROBOTS



MOBILE ROBOTS



PRECISION ROBOTS



SCARA & CARTESIAN



EDUCATIONAL ROBOTS



CONVEYORS



MOVING COIL ACTUATORS



LASER MARKING SYSTEMS



SAFETY GUARDING & SENSORS



ROBOT ACCESSORIES



3D VISION SYSTEMS



BAR CODE & VISION



GEAR BOXES



ELECTRIC CYLINDERS



YOUR APPLICATION. OUR EXP

For over 20 years, In-Position Technologies has customers to deliver cost-effective, quality robotic the entire team focused on delivering quality.



TELL US ABOUT YOUR APPLICATION

With 100+ years of solving real world automation challenges we can help

- Machine Tending • Welding • Palletizing • Gluing • Part Sorting • Fluid Dispensing
- Weaving • Automated Storage & Retrieval • Gantry Systems • Pick-n-Place
- Automated Steering • Gear Shifting • Mobile Vehicles • Conveyor Tracking
- Auto Eject • Bottling & Canning • 2D Bar Code Reading • Vision Guidance
- Flexible Display Printing • Electronic Gearing • Cut-to-Length • Custom Grippers
- 3D Scanning • Material Handling Automation and much more

TYPICAL APPLICATIONS



Bin Picking



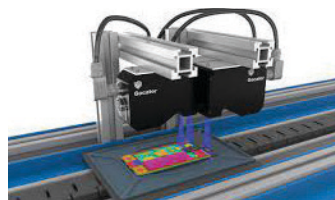
Quality Inspection



Vehicle Electrification



Logistics Automation



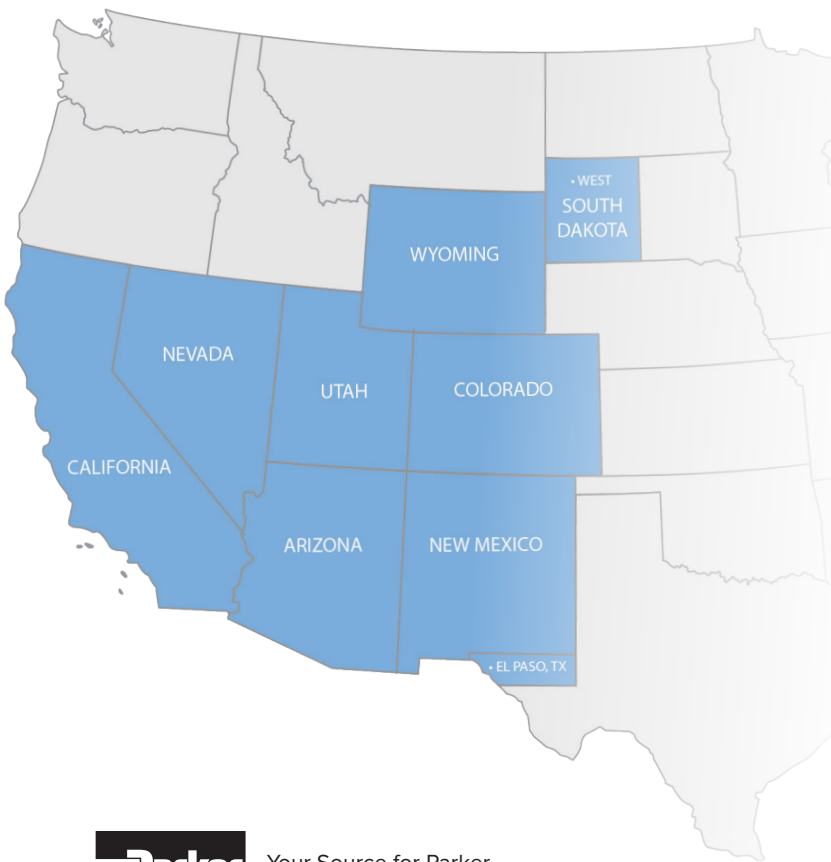
Inline Inspection



Motion Control

PERTISE. YOUR EXCELLENCE.

s partnered with both our suppliers and
c solutions. Our ISO9001 commitment keeps



Your Source for Parker
Automation in the West

WHERE WE ARE

Our experienced staff of highly trained account managers, engineers, and customer service professionals serve local markets in Arizona, California, Colorado, New Mexico, Nevada and Utah. Contact us today to receive a no cost consultation and price guide.

MANUFACTURERS



*Contact us for individual manufacturer geographic authorizations.



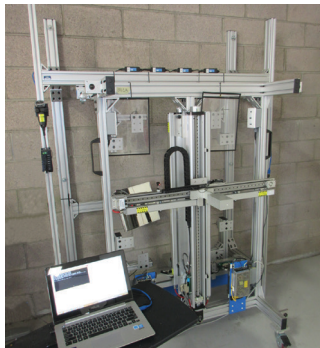
YOUR ISO-9001 VALUE ADDED PARTNER

Why use IPT Value Added Services?

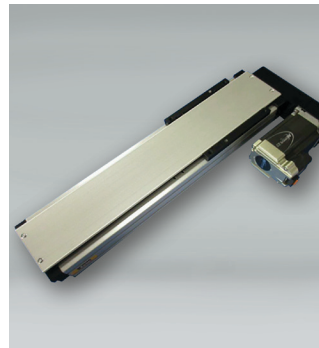
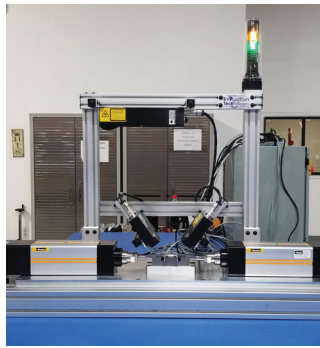
- Lower overall cost
- Reduce your time to market
- Focus on your core competencies
- Lower your risk
- Reduces staffing and facility requirements

Benefits of using IPT Products & Services

- Improve machine performance
- Improve yield
- Improve safety
- Reduce power consumption



Custom Products

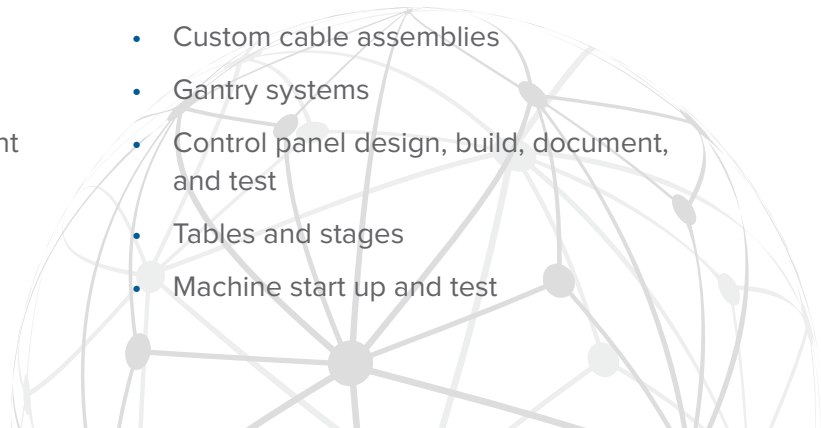


Mechanical Sub-assemblies



Value Added Services Provided by IPT

- Custom engineering
- Robot installation and programming
- Multi-axes motion control
- Electrical enclosures
- Structural aluminum framing
- Programming and software development
- Field support, installation, and training
- 3D solid modeling software
- Mechanical sub-assemblies
- Machine vision systems
- Kitting and custom part numbers
- Custom cable assemblies
- Gantry systems
- Control panel design, build, document, and test
- Tables and stages
- Machine start up and test





WHAT IS AMR TECHNOLOGY?

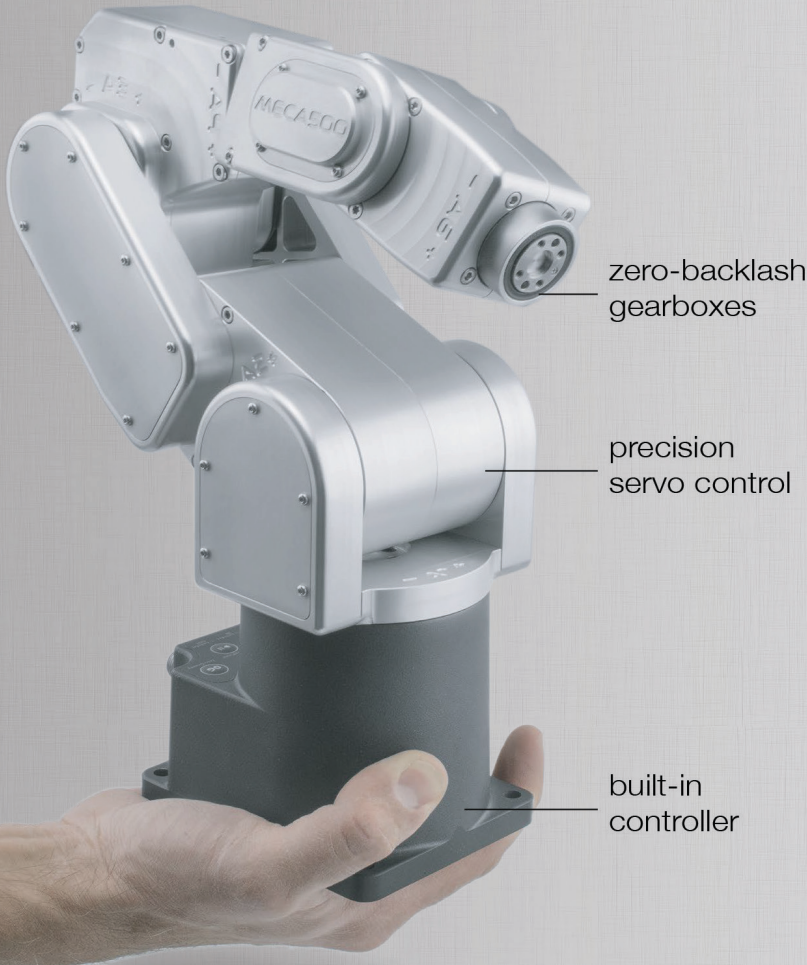
Autonomous Mobile Robots (AMRs) are vehicles that use on-board sensors to autonomously move materials around a facility without the need to make physical changes to the building structure. AMRs use these on-board sensors to identify and avoid both moving and stationary obstacles to effortlessly navigate around your facility. Sophisticated mapping software allows AMRs to be commissioned in 1-2 days, rather than weeks or months. MIR's AMRs are small and agile. Designed from the start to be collaborative. They are safe to use in highly dynamic environments overlaid with human traffic.

AMR SOLUTIONS

In-Position Technologies is your one stop industrial AMR solutions provider. Our team of mechanical engineers work tirelessly with your production team to interface our AMR carts to your existing product requirements, while our team of software engineers do the same with your IT team to safely interface our Fleet supervisory software to your MRP/ERP software.



INTRODUCING THE MECA500



MECA500

SAVE SPACE

Make optimal use of your confined space by using the Meca500, the 6-axis industrial robot with the smallest footprint and all-in-one design. Go compact.

IMPROVE QUALITY

Reliably automate micropositioning tasks and delicate manipulations thanks to Meca500's unrivaled precision and accuracy. Choose perfection.

GAIN CONTROL

Integrate the Meca500 into your system or production line without hassle, thanks to the robot's simple but powerful connectivity. Embrace usability.

EtherCAT
Control

Specifications

5 Micron Repeatability

Repeatability	0.005 mm	Speed of joints 1-6	{150, 150, 180, 300, 300, 500} °/s
Reach (at wrist center)	260 mm	Brakes	on joints 1, 2 and 3
Total weight	4.5 kg	Robot mounting	any orientation
Range of joint 1	-175° to +175°	Supply voltage	24 V DC
Range of joint 2	-70° to +90°	Power consumption	50 W (for a typical program)
Range of joint 3	-135° to +70°	Communication	Ethernet TCP Socket, EtherCAT
Range of joint 4	-170° to +170°	Controller	embedded in robot base
Range of joint 5	-115° to +115°	Protection rating	IP 40
Range of joint 6	±100 revolutions		