

MOT Low Voltage Servo Motors

Combining high dynamics and power density, MOT synchronous servo motors provide an efficient and economical solution for low voltage applications. Paired with ZED low voltage servo drives, MOT servo motors offer excellent performance and high power density in a compact design.

Optimal servo motor solutions for cost-effective low-voltage applications

The MOT series of permanent magnet low voltage servo motors includes four servo motors with a power range from 50 W to 3kW and a peak torque of up to 28.6 Nm.

The series' electromechanical design ensures a highly dynamic performance and low cogging. A range of motor feedback devices as well as winding, cable, and connector options are available on request and can be customized to the specific application needs.

Seamless integration with STXI's ZED servo drives for optimal performance

The ZED-MOT servo drive and motor bundle is optimized for best performance, offering advanced functionality, high power density, and seamless commissioning in a cost-effective package.

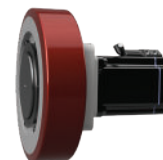
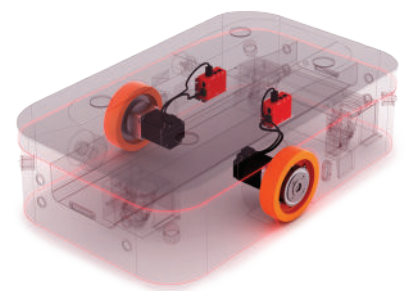
Configurable motor and gear options to meet specific application requirements.

MOT servo motors offer a wide range of flexible gear and motor configurations. With optional motor holding brakes, a compact design for space-constrained environments, and energy-efficient performance, these IP54-rated motors are built to handle high radial and axial forces. With power options ranging from 200-800 W, rated torque of 6.4-64 Nm, and speeds of up to 3000 rpm, they operate at 24-48V and can be customized to meet specific application requirements.



Product Highlights

- Frame size: 40 - 130 mm
- 0.16 to 9.55 Nm rated output torque
- 50 to 3kW rated output power
- Low cogging
- Insulation class B
- Feedback: Incremental, AqB, 4096 ppr + HALL signal
- IP54 protection class (IP65 optional)
- Motor holding brake (optional)
- CE and cUL certifications



MOT - GM
Wheel Hub Gear Motors



MOT - SG
Gear Motors

MOT product offering

Each motor model can be ordered with the following options:

- Shaft: Smooth, keyway
- Brake: With brake, without brake
- Connector: 0.35m cable with mating connector for ZED servo drives

Rating and dimensions

Model	Flange Size (mm)	Voltage (VDC)	Power (W)	Rated Current (Arms)	Rated Torque (Nm)	Rated Speed (rpm)	Max. Speed (rpm)
SM2-40001	40	48	50	1.50	0.16	3000	5000
SM2-40003	40	48	100	2.80	0.32	3000	5000
SM2-60006	60	48	200	6.50	0.64	3000	5400
SM2-60013	60	48	400	12.00	1.27	3000	5000
SM2-80015	80	48	480	14.60	1.53	3000	5100
SM2-80025	80	48	800	22.60	2.55	3000	4800
SM2-80035	80	48	1100	31.50	3.50	3000	4800
SM2-11045	110	48	1350	37.00	4.20	3000	4800
SM2-13060	130	48	2000	45.30	5.97	3200	4800
SM2-13095	130	48	3000	69.90	9.55	3200	4800

Ordering information

	SM2	-	60	006	4	30	0	5	AB	0	M
SM2 Servo Motor											
Frame Size											
40	40 mm										
60	60 mm										
80	80 mm										
11	110 mm										
13	130 mm										
Torque											
001	0.16 Nm (40mm, 50W)										
003	0.32 Nm (40mm, 100W)										
006	0.64 Nm (60mm, 200W)										
013	1.27 Nm (60mm, 400W)										
015	1.53 Nm (80mm, 480W)										
025	2.55 Nm (80mm, 800W)										
035	3.50 Nm (80mm, 1.1kW)										
042	4.20 Nm (110mm, 1.4kW)										
060	6.00 Nm (130mm, 2 kW)										
095	9.55 Nm (130mm, 3 kW)										
DC Bus Voltage											
2	24 VDC (optional)										
4	48 VDC										
Rated Speed											
30	3000 rpm										
32	3200 rpm (2 + 3 kW)										
Shaft											
0	Smooth										
2	Keyway										
IP Rating											
4	IP40										
5	IP54										
Feedback											
AB	Incremental encoder AqB, Res.4096 ppr + Halls										
Brake											
0	No brake										
B	With brake										
Connector											
F	0.35 m cable with flying leads										
M	0.35 m cable with connector for ZED-drive, Power+Feedback+Brake										

